

MAIN PARTICULARS

DETAILS

Vessel Type	Platform Supply Vessel
Year of Built and Shipyard	2019
Class Notation	ABS, ⚙️A1 ⓈOffshore Support Vessel; (SUPPLY-HNLS, FFV1,OSR-C2),SPS ⚙️AMS, ACCU, DPS-2

MAIN DIMENSION

Length Overall	75.00m
Beam Moulded	17.25m
Depth Moulded	8.00m
Draft Max.	6.60m
Draft Light	3.60m
GRT	2948
NRT	916
DWT	3312 MT
Deck Area	700 m2
Deck Cargo Capacity	1200 MT
Deck Strength	5.5 T/m2

ACCOMMODATION

Accommodation	Crew: 16 SPS:34
---------------	--------------------

MACHINERY/PERFORMANCE

MACHINERY

Main Engine	NIIGATA X 8L28HX X 2 Sets
ROP	2206KW X 2 Sets (6000HP)
Propeller	Azimuth Thruster X 2 Sets
Auxiliary Engine	DGS 450KW X 3 Sets
Shaft GS 1 000KW X 2 Sets EGS 82KW X 1 Sets	
Bow Thruster	650KW (10T) X 2 Sets

PERFORMANCE

Max Speed	12.5 Knots
Eco. Speed	10 Knots

CAPACITY

Fuel Oil	638.6 m3
Fresh Water	550 m3
Dry Bulk	227.7 m3 (4 Tanks)
CFO	713.7 m3
Mud,Brine,RO	739.4 m3
Drill Water	1527 m3
Base Oil	242.47m3

FUEL CONSUMPTION

Maximum consumption	14880KL/day
Average consumption in DP2 mode	6000KL/day
Consumption while standing by in port	650KL/day
Consumption during economy steam	9120KL/day
Consumption while stand by at anchorage	650KL/day
Consumption during full steam	14880KL/day

EQUIPMENT & ELECTRONICS

DECK EQUIPMENT

Deck Crane	3MT X 10m
Anchor	PAC-14 X 2 Sets
	Weight 2030KG Each
Chain	P:46mm X 18 shots
	S:46mm X 17 shots
Windlass	10T X 2 Sets
Tugger	10T X 2 Sets

DYNAMIC POSITIONING SYSTEM

DP	DP-2, Kongsberg
----	-----------------

LIFE SAVING EQUIPMENT

Life Raft	6 x 25P
Rescue Boat	WJ4.5DR 4.5m x 1.7m x 0.75m Speed 6 knots with 6 persons
Fast Rescue Boat with Davit	1 x Fast Rescue Boat VG6.0FRW ( VANGUARDE) 6.4m x 2.29m x 0.87m Diesel inboard Engine-BUKH R210 and Waterjet Propulsion Speed with full persons Min. 8 knots in calm water 1 x Davit VAH35
External FFS	FiFi 1, 2 X 1500 m3/h water spraying System. Length of Throw120 m Fifi Foam Tank:12.7m3
Dispersant and Spilled Tank	Dispersant Tank: 12.7 m3 FO overflow Tank: 23.3 m3

NAVIGATION AND COMMUNICATION EQUIPMENT

DGPS	1xFURUNO GP-150
Gyro-Compass	3xAnschutz STD 22 110-233
Magnetic Compass	2xLILLEY&GILLIE SESTREL SR
Facsimile Receiver	FURUNO FAX-408
NAVTEX	FURUNO NX-700A
Autopilot	Pilotstar D Anschutz
Echo Sounder	FURUNO FE 800
Speed Log	FURUNO DS 80
Radar	FAR-2117(X-BAND) FAR-2137S(S-BAND)
VDR	NIL
ECDIS	AWENA-1ECS
AIS	FURUNO FA-150

DOCKINGS

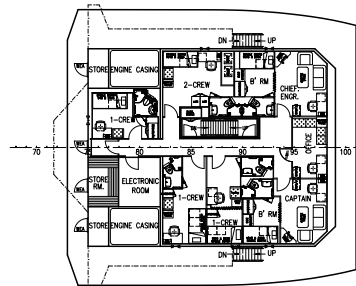
Date of last Dry Dock	Jun 04, 2024
Date of Last Special Survey	Jun 04, 2024
Next Survey Due Date	Jun 04 ,2025
Date of Last Annual Survey	Sep 18,2023

# PRINCIPAL DIMENSIONS

LENGTH (O.A.)	75,000 M
LENGTH (W.L.)	72,515 M
LENGTH (B.P.)	67,468 M
BEAM (M.L.D.)	17,250 M
DEPTH (M.L.D.)	8,000 M
MAX. DRAFT (M.L.D.)	6,600 M
TOTAL DWT	3,300 TONS
FUEL OIL	638 M <sup>3</sup>
FRESH WATER	550 M <sup>3</sup>
MUD / BRINE / R.O.	730 M <sup>3</sup>
BASE OIL	242 M <sup>3</sup>
CLEAR DECK AREA	650 M <sup>2</sup>
DECK CARGO (DECK LOADING = 5.5T/M <sup>2</sup> )	1200 TONS
DRY BULK TANKS (4x2000 FT <sup>3</sup> =8000 FT <sup>3</sup> )	226 M <sup>3</sup>
MAIN PROPULSION	2 X 3000 PS
SPEED (TRIALS)	13.0 KNOTS
COMPLEMENT	40 MEN
CREW	10 MEN
SPECIAL PERSONEL	40 MEN

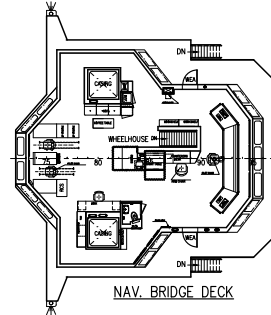
CLASS & NOTATION :

ABS ★ A1 (C) OFFSHORE SUPPORT VESSEL (SUPPLY-HNLS,  
FFV1, OSR-C2), SPS  
★ AMS, ★ ACCU, ★ DPS-2

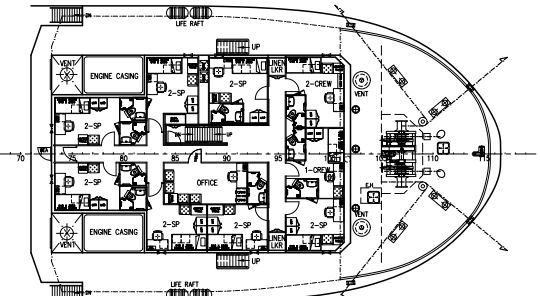


OFFICER DECK

5 x 1-CREW = 5 MEN  
1 x 2-CREW = 2 MEN  
TOTAL = 7 MEN

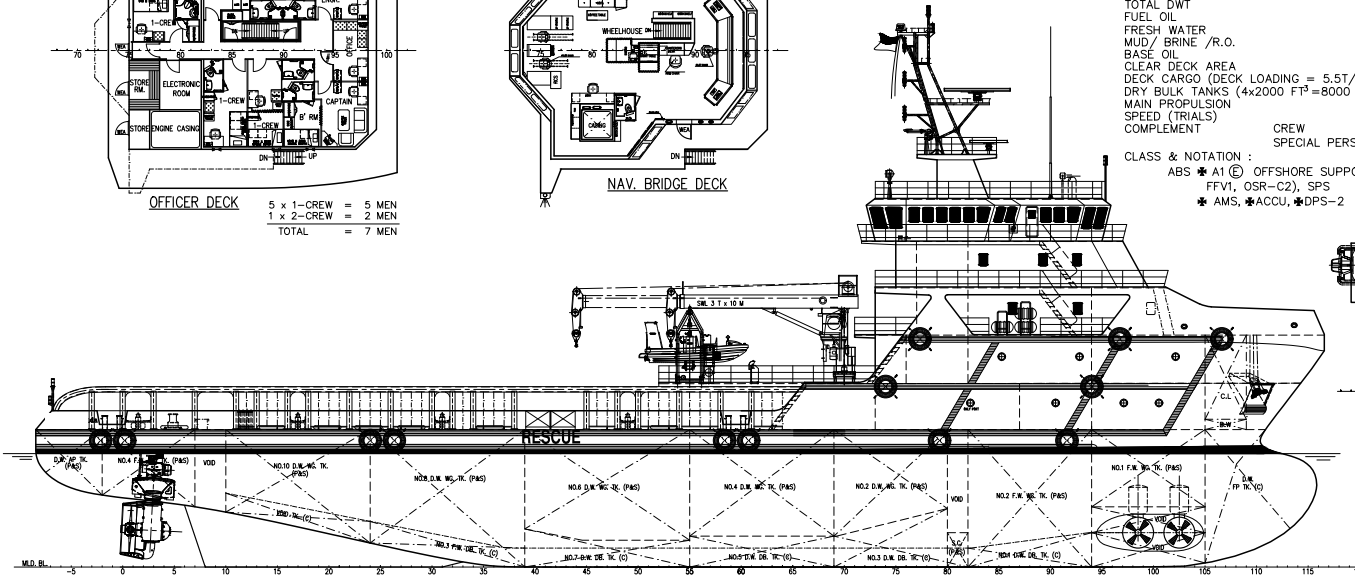


NAV. BRIDGE DECK

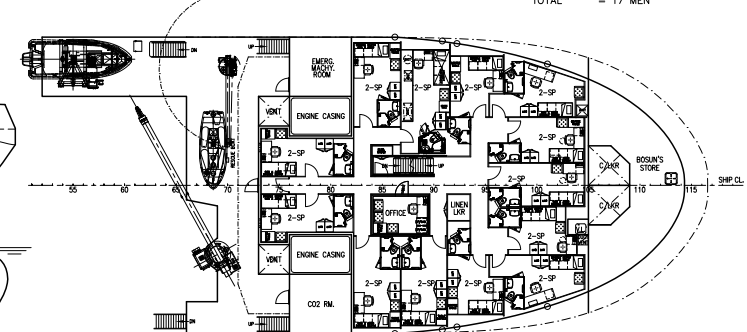


UPPER FORECASTLE DECK PLAN

1 x 1-CREW = 1 MEN  
1 x 2-CREW = 2 MEN  
7 x 2-SP = 14 MEN  
TOTAL = 17 MEN

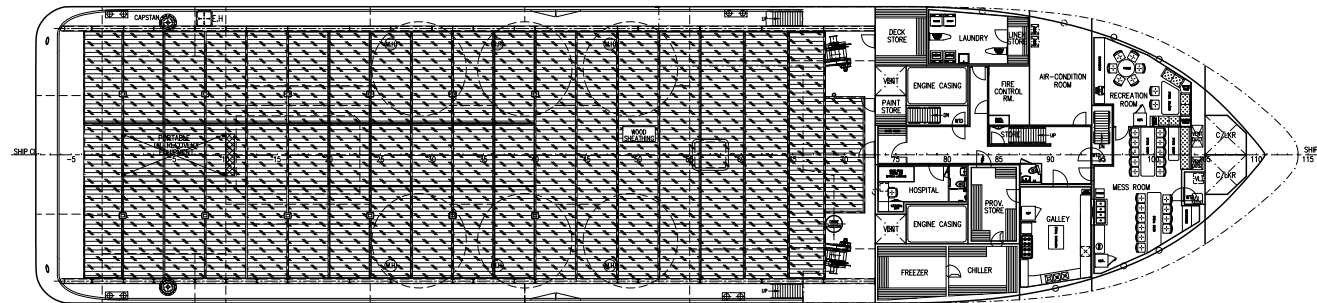


OUTBOARD PROFILE

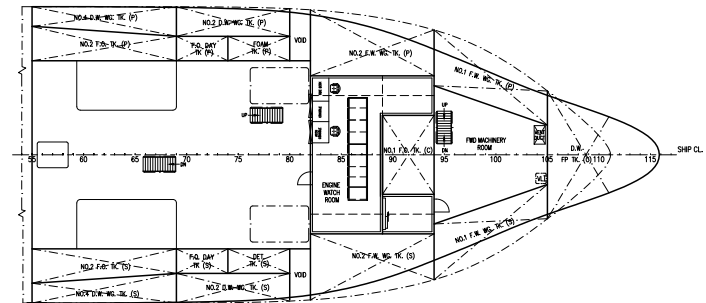


FORECASTLE DECK PLAN

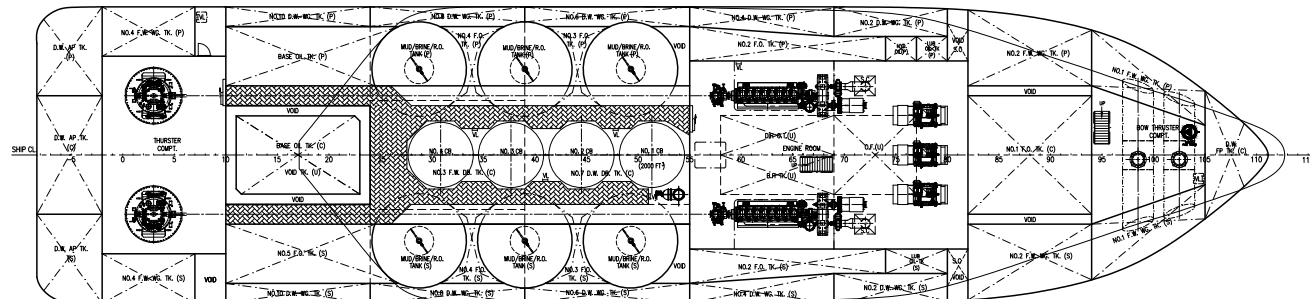
13 x 2-SP = 26 MEN  
TOTAL = 26 MEN



MAIN DECK PLAN



TWEEN DECK PLAN



BELOW DECK PLAN

## NOTE:-

- PLEASE NOTE MUD/BRINE/R.O. TANK SHALL CARRY RECOVERY OIL OF A FLASHING POINT EXCEEDING 60°C AND POLLUTION HAZARD ONLY SUBSTANCES OF A FLASHING POINT EXCEEDING 60°C LISTED IN IMO A.673.
- IF APPROPRIATE ARRANGEMENTS TO AVOID INJURY TO PERSONS IN THE CORRIDOR SHALL BE CONSIDERED.
- A TOE BOARD OR KICK PLATE BE INSTALLED ON THE BRIDGE WING DECK BELOW THE LOWER RAIL COURSE.
- DECK AREA FOR HANDLING OIL AND OIL-BASED LIQUID ARE TO BE PROVIDED WITH A COATING OF AT LEAST 150MM HEIGHT AROUND ALL PUMPS, TRANSFER FLANGES, CONNECTIONS AND OTHER EQUIPMENT WHERE LEAKAGE MAY OCCUR. COATING FOR RECOVERY OIL MAY BE OF REMOVABLE TYPE.

CD	DN/NO TANKS ARMED AS DN TANKS, NO.5 F.O. TK (P) AS B.O. TK (P)	YUNINGYE	24.02.25
CD-2	SHIP NAME UPDATED	YUNINGYE	13.02.25
CD-1	MEZZ DECK EXTENDED	YUNINGYE	07.02.25
CD	CRIC ADDED	YUNINGYE	06.02.25
REV.	DETAILS OF MODIFICATION	BY	DATE
CONSULT	<b>KHIAM CHUAN MARINE PTE LTD</b> 51, BUKIT BATOK CRESCENT, #01-53, THE SPLENDOUR SINGAPORE 658070 Tel+65-67753383 Fax+65-67753788 Email: khiamchuan@kcm.com.sg		

PROJECT	75m PLATFORM SUPPLY VESSEL		
TITLE	GENERAL ARRANGEMENT		
CLASSIFICATION	REV.	NO.	DATE
16-12-13	C2	FN75M-20	24.02.25
DRAWN	CHECKED	SCALE	DRAWING NUMBER
YUNINGYE		1:150	KCM/Q663 - G1

THIS DOCUMENT AND THE INFORMATION IT CONTAINS IS COPYRIGHT AND REMAINS THE PROPERTY OF KHIAM CHUAN MARINE PTE LTD. IT IS NOT TO BE COPIED IN WHOLE OR IN PART OR DISCLOSED TO ANY THIRD PARTY FOR ANY PURPOSE WHATSOEVER WITHOUT PRIOR WRITTEN CONSENT.